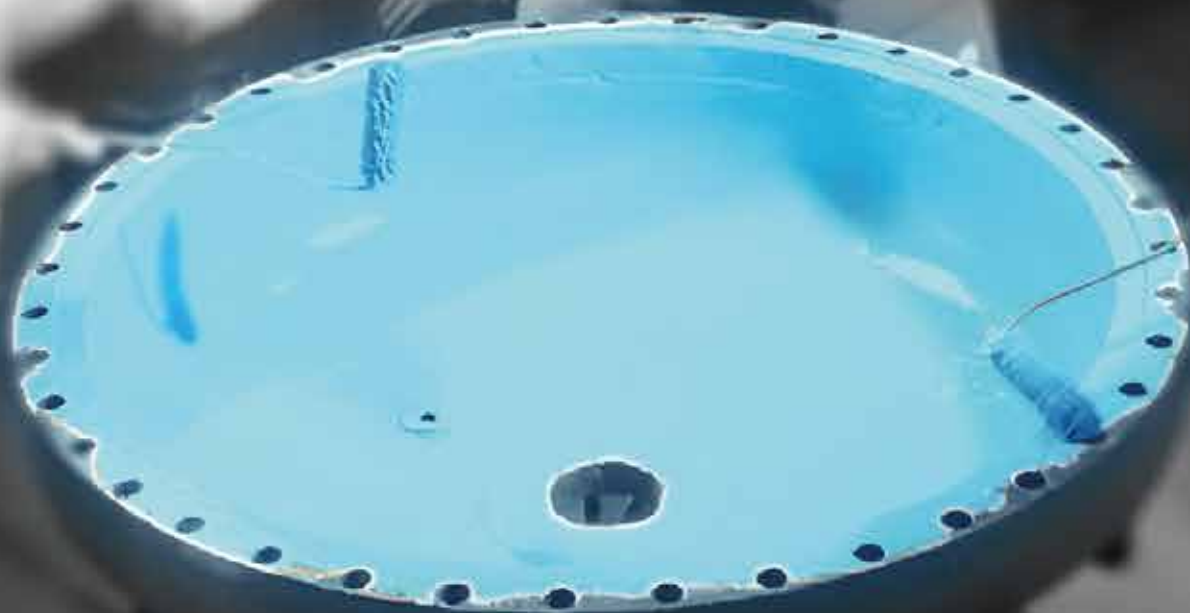




**INNOVATION,
NOT IMITATION**

Nordbak®



“

*An
Indispensable
Part of the
System*

”



NORDBAK® its products have developed from a single product, used only in crushers, to its wide range of world-renowned products.

Manufacturers and trademark holders, **NORDBAK®** attributes the development of the broader range to a growing need by the industry for different types of products. These include an expansion into world-renowned abrasive resistant, acid, alkaline and corrosion-resistant coatings, and a large range of general-purpose products for the construction and industrial sectors. Continuous research by the **NORDBAK®** principal and associated company's worldwide support the development of these products.

NORDBAK® products are continually on test in new applications with great success. **NORDBAK®** will tailor-make a product for a specific application. By utilizing the latest generation of chemicals available we have improved the quality of all our products to a level, which surpasses the previously set standards for all applications. The highest standards of quality control methods are applied to the manufacturing process and to applications.

We are the preferred supplier at a host of mines as well as a diverse sector of specialized industries, including food and food packaging. **NORDBAK®** polymer-based products are used successfully in general engineering, petrochemicals, building and civil construction, sugar mills, cement manufacture, food processing plants and water reticulation. Repair and maintenance uses are constantly evolving.

WINKEL® NORDBAK® personnel have a high degree of professionalism and innovative ideas, using a wide range of products together with the ability and expertise to recognize and solve customer problems, which exist in a variety of areas. We have trained contractors that apply the entire range of **NORDBAK®** products. Equipment repairs can be undertaken on-site or in-house, depending on the nature of the repair. These contractors have years of experience, with an intimate knowledge of the **NORDBAK®** product range and their special properties. **NORDBAK®** regional offices and agents in major centres have adopted all **NORDBAK®**'s business policies, with a commitment to quality and service excellence.

Our Products

WINKEL NORDBAK® at a host of mines as well as a diverse sector of specialised industries, including general engineering, petrochemicals, building and civil construction, sugar mills, cement manufacture, water reticulation and food processing.

Our Products Include:

Wear & Abrasion Resistant Compounds
Crusher & Mill Repair Products
Coatings, Grouts & Pulley Lagging



PRODUCT APPLICATIONS

Our premium range of products can be utilized as follows:

CRUSHER & MILL REPAIR PRODUCTS

- For the backing and reinforcement of metal liner plates.
- Filling of gaps between liners & support structures.
- Protection of new liners in trunions.

WEAR & ABRASION RESISTANT COMPOUNDS

- For all high wear and erosion areas in processing plants. These include various applications including water, slurry, aggregate transportation, and protection against acid or chemical attack.
- For the internal lining of pipes, pipe bends, chutes, pumps, tank walls, agitator blades, cyclones, splitter and distribution boxes, launders, de-watering bins and granulation bins.

PULLEYS

- Supply of Hi-Impact Pulley compound (SANS 1669) as well as new pulleys manufactured and lagged to SANS 1669 specifications.

COATINGS

- A range of coatings for superb resistance to corrosion, wear, water and acid environments.
- Can be used on concrete and steel as well as a wide variety of other substrates.

GROUTS

- Grouts are for the reinforcing or repair of all heavy machinery foundations and offer unique advantages in their strength. One hundred percent (100%) solids with no shrinkage.

CRUSHER & MILL REPAIR PRODUCTS



For the backing and reinforcement of metal liner plates and the filling of gaps between liners and support structures and the protection of new liners in trunions. They can be used in Cone Crushers, Primary Gyratory Crushers, Rotating Mills, Pulverisers and other reduction machinery.

BACKING-PRIMARY

WINKEL® NORDBAK® BACKING-PRIMARY for backing metal wear plates in Primary Gyratory Crushers giving exceptional compressive and impact strengths together with improved tensile strength.

Art.No: 70104 (20 Kg)

9020H BACKING-HI-PERFORMANCE

WINKEL® NORDBAK® 9020H BACKING-HI-PERFORMANCE for backing metal wear plates in large Gyratory Crushers and Cone Crushers. WINKEL NORDBAK® 9020H BACKING-HI-PERFORMANCE, offers excellent impact strength and resilience, together with high compressive and tensile strength.

Art.No: 70101 (10 Kg)

Art.No: 70106 (20 Kg)

9020 BACKING-STANDARD

WINKEL® NORDBAK® 9020 BACKING-STANDARD is a tough, resilient and ideal backing for smaller Cone Crushers, Gyratory Crushers, Rotating Mills, Pulverisers and other heavy reduction machinery.

Art.No: 70100 (10 Kg)

Art.No: 70200 (20 Kg)

SUPERBAK BACKING

WINKEL® NORDBAK® SUPERBAK BACKING is a low cost backing that is tough, resilient and ideal for smaller Cone Crushers, Gyratory Crushers, Rotating Mills, Pulverisers and other heavy reduction machinery.



LOW VISCOSITY BACKING

WINKEL® NORDBAK® LOW VISCOSITY BACKING is a low viscosity backing that is tough, resilient and ideal for pouring into narrow orifices of smaller Cone Crushers, Gyratory Crushers, Trunion Liners, Pulverisers and other heavy reduction machinery.



LOCKING COMPOUND (POA)

WINKEL® NORDBAK® LOCKING COMPOUND is a high temperature and high impact material for locking inner and outer eccentric bushes in cone crushers.

Art.No: 70107 (2.8Kg)



TROWEL MIX

WINKEL® NORDBAK® TROWEL MIX is ideal for sealing backing liners in all types of Crushers and Mills. Trowel Mix has a paste-like consistency that eliminates the need for dismantling the mill or removing the grinding charge. WINKEL® NORDBAK® Trowel Mix also secures liner bolts in their holes.

Art.No: 70102 (12 Kg)



A STEEL PUTTY TROWEL MIX

WINKEL® NORDBAK® A STEEL TROWEL MIX is a metal repair product that can be machined, drilled, tapped or filed just like steel. WINKEL® NORDBAK® A STEEL TROWEL MIX applies readily to horizontal, vertical or overhead surfaces. WINKEL® NORDBAK® A STEEL TROWEL MIX resists abrasion and chemical corrosion, cures without heat or special devices, and is non-shrinking.

Art.No: 80030 (1 Kg)

Art.No: 80040 (12 Kg)





WEAR & ABRASION RESISTANT COMPOUNDS

For all high wear and erosion areas in the plant process with various specifications from water, slurry, aggregate transportation to protection from acid and chemicals.

For the lining of pipes, pipe bends, chutes, pumps, tank walls, agitator blades, cyclones, splitter and distribution boxes, launders, de-watering bins and granulation bins.



BENEFITS of USING WINKEL® NORDBAK®

- Up to 10 times the life of steel and extensively outlasts rubber in many applications (SABS).
- Does not perish, does not break loose.
- Does not cause downstream blockages.
- Integral bond to the substrate.
- Elevated temperature resistance,
- Easily repaired and applied in situ.
- Toxicity Tested.



WEARING COMPOUND-HI IMPACT PULLEY

WINKEL® NORDBAK® HIGH IMPACT PULLEY was designed to meet the South African National Standard (SANS 1669-2) for pulley lagging. WINKEL® NORDBAK® HIGH IMPACT PULLEY complies with Naval Engineering Standard 713 for Smoke Toxicity, ISO 340 - 2004 for flammability and is suitable for underground applications.

Art.No: 50400 (12.5 Kg)



FIXWEAR

*Also available in Food Grade.

WINKEL® NORDBAK® FIXWEAR® is designed for armour-surfacing wear areas caused by abrasion.

Art.No: 50300 (10 Kg)

Art.No: 50500 (1 Kg)

ABRASION-RESISTANT PRODUCTS

7219 NORDTILE

WINKEL® NORDBAK® 7219 NORDTILE is a high alumina filled co- polymer trowelable monolithic paste with excellent wear resistant properties together with resilience, impact strength and chemical resistance. It is designed specifically for slurry lines, pump casings, chutes, hoppers and very high wear abrasion applications. Complies to NES 713 for smoke toxicity.

Art.No: 50000 (7 Kg)



NORDWEAR 8

WINKEL® NORDBAK® NORDWEAR 8 is an alumina filled co- polymer trowelable paste with excellent wear-resistant properties together with resilience, impact strength and chemical resistance. The product is also suitable for both waterborne slurries and pneumatic conveyancing.

Art.No: 50600 (10 Kg)



NORDWEAR 5

***Also available in Food Grade.**

WINKEL® NORDBAK® NORDWEAR 5 is an alumina filled co- polymer trowelable paste with excellent wear-resistant properties together with resilience, impact strength and chemical resistance. The product is also suitable for both waterborne slurries and pneumatic conveyancing. Complies to NES 713 for smoke toxicity.

Art.No: 50200 (10 Kg)



NORDWEAR 5 ACID

***Also available in Food Grade.**

WINKEL® NORDBAK® NORDWEAR 5 ACID is a co-polymer trowelable paste with excellent acid resistance and wear-resistant properties together with resilience and impact strength. Specifically designed for plants where high levels of salts are present at various pH values.

Art.No: 50202 (10 Kg)

Art.No: 50203 (1 Kg)





PULLEY LAGGING

NORDBAK® supplies and lags pulleys in accordance with SANS 1669:2008.

- Hi-Impact Pulley Compound surpasses all requirements for SANS 1669, including the flammability and toxicity requirements for underground pulleys.
- Has a Toxicity Index of 2
- Contains 99.8% Alumina Beads
- Superior adhesion
- Has a co-efficient of friction of 20% greater than rubber
- Outlasts rubber in tests by at least 10 fold
- Bead content repels water thus preventing slippage and increasing the life of the conveyor belts



WEARING COMPOUND HI IMPACT PULLEY

WINKEL® NORDBAK® HIGH IMPACT PULLEY is designed to meet the South African National Standard (SANS 1669-2) for pulley lagging. WINKEL® NORDBAK® HIGH IMPACT PULLEY complies with Naval Engineering Standard 713 for Smoke Toxicity, ISO 340 - 2004 for flammability and is suitable for underground applications.

Art.No: 50400 (12.5 Kg)

*Please refer technical service for detailed information.





Nordbak®

“

BY UTILIZING THE LATEST GENERATION OF CHEMICALS

available we have improved the quality of all our products to a level which surpasses the previously set standards for all applications. The highest standards of quality control methods are applied to the manufacturing process and to installations.

”



COATINGS

A range of coatings for superb resistance to corrosion, wear, water and acid environments. Can be used on concrete and steel as well as a wide variety of other substrates.

Each kit is a two-part system (Resin & Hardener) which when mixed, creates a single product for one or more individual coating applications.

For the application to internal and external pipes, structural steel, tanks, scrubbers, thickeners, agitators, process vessels and various floors.

WINKEL® NORDBAK® ADVANTAGES OF USING:

- Longer life of WINKEL® NORDBAK® products minimises downtime, maintenance costs and shutdown periods.
- **Extends the life of the steel pipe**
 - » Superior adhesion bond between steel and lining prevents corrosion and ingress of foreign matter between lining and steel.
 - » Pipe continuously reusable as product lining is repairable.
- Does not break out in chunks to block pumping systems and choke pipelines
- Easily repairable by unskilled labour
- WINKEL® NORDBAK coatings only require a one coat application
- No primers or undercoats required
- Curing times as low as 1 hour
- Can be applied by brush, roller or spray
- Safe for underground usage (Low Toxicity Index)

COATING PRODUCTS

NORDCOAT 1

WINKEL® NORDBAK® NORDCOAT 1, is an outstanding corrosion and waterproof coating which can be used on both concrete and steel, as well as a wide variety of other substrates. WINKEL® NORDBAK® NORDCOAT 1 complies with South African National Standard 1217 for coating of pipes and with Naval Engineering Standard 713 for Smoke Toxicity.

Art.No: 60030 (10 Kg)

Art.No: 60032 (1 Kg)

NORDCOAT 1 SPECIAL

WINKEL® NORDBAK® NORDCOAT 1 SPECIAL is an outstanding corrosion, acid-resistant and waterproof coating which can be used on both concrete and steel, as well as a wide variety of other substrates. WINKEL® NORDBAK® NORDCOAT 1 SPECIAL is ideal for coating at low ambient temperatures. WINKEL® NORDBAK® NORDCOAT 1 SPECIAL complies with South African National Standard 1217 for coating of pipes and with Naval Engineering Standard 713 for Smoke Toxicity.

Art.No: 60031 (1 Kg)

NORDCOAT ¼

WINKEL® NORDBAK® NORDCOAT ¼ is an outstanding waterproof, corrosion and solvent resistant coating which can be used on both concrete and steel, as well as a wide variety of other substrates. WINKEL® NORDBAK® NORDCOAT ¼ complies with South African National Standard 1217 for coating of pipes and is designed for the wine, beer and spirit industries.

7227 NORDCOAT 2

WINKEL® NORDBAK® 7227 NORDCOAT 2 is an outstanding heavy-duty wear, acid and corrosion resistant coating which can be used on steel, as well as a wide variety of other substrates. Specifically designed for plants where high levels of salts are present at pH values between 3 and 10.

Art.No: 60001 - Black (1 Kg)

Art.No: 60000 - Blue (1 Kg)



COATING PRODUCTS CONT.

NORDCOAT 6 ANTI-STAT STANDARD

WINKEL® NORDBAK® NORDCOAT 6 ANTI-STAT STANDARD is an anti-static coating with outstanding corrosion and water- resistant properties which can be used on steel, as well as a wide variety of other substrates. Tested against South African National Standard 1217 for pipe lining and against South African National Standard 241 (drinking water).

Art.No: 60041 (5 Lt)

NORDCOAT 6

WINKEL® NORDBAK® NORDCOAT 6 is a coating range with various colours suitable for underground applications with outstanding corrosion and water-resistant properties which can be used on steel and concrete as well as a wide variety of other substrates. Tested against and complies with Naval Engineering Standard 713 for Smoke Toxicity, South African National Standard 1217 for pipe lining and against South African National Standard 241 (drinking water).

Art.No: 60043 Grey (5 Lt)
Art.No: 60044 White (5 Lt)
Art.No: 60045 Blue (5 Lt)
Art.No: 60046 Green (5 Lt)
Art.No: 60048 Yellow (5 Lt)
Art.No: 60049 Black (5 Lt)
Art.No: 60057 GP Grey (5 Lt)

Art.No: 60050 Red (5 Lt)
Art.No: 60051 Orange (5 Lt)
Art.No: 60047 Bright Green (5 Lt)
Art.No: 60054 Grey Green (5 Lt)
Art.No: 60055 Terracotte (5 Lt)
Art.No: 60056 Light Stone (5 Lt)

NORDCOAT 6 GALV

WINKEL® NORDBAK® NORDCOAT 6 GALV is a coating which can be used on galvanised steel and underground applications with outstanding corrosion and water- resistant properties. Tested against and complies with Naval Engineering Standard 713 for Smoke Toxicity.

Art.No: 60042 - Galvanize (5 Lt)

7255 NORDCOAT 6 ACID

WINKEL® NORDBAK® 7255 NORDCOAT 6 ACID is a coating suitable for underground applications with outstanding acid, corrosion and water-resistant properties which can be used on steel and concrete as well as a wide variety of other substrates. Tested against and complies with Naval Engineering Standard 713 for Smoke Toxicity, South African National Standard 1217 for pipelining.

Art.No: 60040 (5 L)

NORDCOAT 7 ACID

WINKEL® NORDBAK® NORDCOAT 7 ACID is an outstanding heavy-duty acid, wear and corrosion resistant coating which can be used on steel, as well as a wide variety of other substrates. Specifically designed for plants where high organic and inorganic acid levels and salts are present at pH values between 1 and 13.

Art.No: 60052 (1 Kg)

7221 PS 1

WINKEL® NORDBAK® 7221 PS 1 gives a very hard smooth corrosion, acid-resistant and wear-resistant finish to dams, tanks, pipes and retaining walls. WINKEL® NORDBAK® 7221 PS 1 is designed for general acids and higher levels of chlorine.

Art.No: 60020 Blue (10 Kg)

Art.No: 60010 Blue (1 Kg)

Art.No: 60021 White (10 Kg)

Art.No: 60011 White (1 Kg)

OIL SEAL

WINKEL® NORDBAK® OIL SEAL is a water-miscible co-polymer concrete sealer that is absorbed into the concrete sealing it from ingress of oil and other general contaminants.

Art.Nr: .60053 (10 Kg)



GROUTS

Grouts are for the reinforcing or repair of all heavy machinery foundations and offer unique advantages in their strength. One-hundred percent (100%) solids with no shrinkage. For all foundations of large Crushers and Mills, Bund Walls, Pump Plinths and Workshop Machinery.

9411 DEEP POUR GROUT

WINKEL® NORDBAK® 9411 DEEP POUR GROUT is a 100% solids co-polymer grout that offers unique advantages in its strength. Designed for pours as deep as 150mm, it flows well under rails and sole plates and is self-levelling. Withstands high torque loading and vibration. Bonds securely to steel and concrete and is unaffected by operating temperatures up to 71°C. It sets quickly and therefore machinery is ready for use in 24 hours at 21°C.

Art.No: 80000 (20 Kg)

ACID GROUT

WINKEL® NORDBAK® ACID GROUT is suitable for dilute acid spill areas and offers unique advantage in its strength.

GROUTS

9411F FAST SET GROUT

WINKEL® NORDBAK® 9411F FAST SET GROUT is ideal for grouting new machinery or replacing old grout which has chipped or broken out and sets within 25 minutes. Fast Set Grout is self-levelling, sets up stronger than concrete and resists moisture and chemicals. Maximum pour depth of 75mm.

Art.No: 80010 (10 Kg)



A STEEL PUTTY TROWEL MIX

WINKEL® NORDBAK® A STEEL TROWEL MIX is a metal repair product that can be machined, drilled, tapped or filed just like steel. WINKEL® NORDBAK® A STEEL TROWEL MIX applies readily to horizontal, vertical or overhead surfaces. WINKEL® NORDBAK® A STEEL TROWEL MIX resists abrasion and chemical corrosion, cures without heat or special devices, and is non-shrinking.

Art.No: 80030 (1 Kg)

Art.No: 80040 (12 Kg)



FLOORING

A range of durable floor coatings with superb resistance to corrosion, wear, water and acid environments. Designed to provide protection, easy to clean and maintain.

Can be used on concrete and steel as well as a wide variety of other substrates.

OIL SEAL

WINKEL® NORDBAK® OIL SEAL is a water-miscible co-polymer concrete sealer that is absorbed into the concrete sealing it from ingress of oil and other general contaminants.

Art.No: 60053 (10 Kg)

NORDCOAT 6

WINKEL® NORDBAK® NORDCOAT 6 is a coating range with various colours suitable for underground applications with outstanding corrosion and water- resistant properties which can be used on steel and concrete as well as a wide variety of other substrates. Tested against and complies with Naval Engineering Standard 713 for Smoke Toxicity, South African National Standard 1217 for pipe lining and against South African National Standard 241 (drinking water).

Art.No: 60043 Grey (5 Lt)
Art.No: 60044 White (5 Lt)
Art.No: 60045 Blue (5 Lt)
Art.No: 60046 Green (5 Lt)
Art.No: 60048 Yellow (5 Lt)
Art.No: 60049 Black (5 Lt)
Art.No: 60057 GP Grey (5 Lt)

Art.No: 60050 Red (5 Lt)
Art.No: 60051 Orange (5 Lt)
Art.No: 60047 Bright Green (5 Lt)
Art.No: 60054 Grey Green (5 Lt)
Art.No: 60055 Terracotte (5 Lt)
Art.No: 60056 Light Stone (5 Lt)

NORDCOAT 6 ANTI-STAT STANDARD

WINKEL® NORDBAK® NORDCOAT 6 ANTI-STAT STANDARD is an anti-static coating with outstanding corrosion and water- resistant properties which can be used on steel, as well as a wide variety of other substrates. Tested against South African National Standard 1217 for pipe lining and against South African National Standard 241 (drinking water).

Art.No: 60041 (5 Lt)

7221 PS 1

WINKEL® NORDBAK® 7221 PS 1 gives a very hard, smooth, corrosion, acid-resistant and wear-resistant finish to dams, tanks, pipes and retaining walls. WINKEL® NORDBAK® 7221 PS 1 is designed for general acids and higher levels of chlorine.

Art.No: 60020 Blue (10 Kg)
Art.No: 60010 Blue (1 Kg)

Art.No: 60021 White (10 Kg)
Art.No: 60011 White (1 Kg)



Nordbak®



EFFECTIVE SOLUTIONS WITH PROBLEM SOLVER PRODUCTS

has been in South Africa, its products have developed from a single product, used only in crushers, to its wide range of world-renowned products.



Nordbak®

FOOD PROCESSING

The maintenance costs of a sugar mill can be reduced by applying the correct coatings to corrosion, and acid prone materials.

Our coatings and wearing compounds each have unique properties and areas of application in the food processing industry.

Experience of our products used in various applications in the food industry has illustrated the potential of these products when used at the design stage and during plant maintenance, to reduce running costs and increase the life of the plant.

7221 PS 1

WINKEL® NORDBAK® 7221 PS 1 gives a very, hard, smooth corrosion, acid-resistant and wear-resistant finish to dams, tanks, pipes and retaining walls. WINKEL® NORDBAK® 7221 PS 1 is designed for general acids and higher levels of chlorine.

Art.No: 60020 Blue (10 Kg)

Art.No: 60010 Blue (1 Kg)

Art.No: 60021 White (10 Kg)

Art.No: 60011 White (1 Kg)

NORDCOAT 1

WINKEL® NORDBAK® NORDCOAT 1 is an outstanding corrosion and waterproof coating which can be used on both concrete and steel, as well as a wide variety of other substrates. WINKEL® NORDBAK® NORDCOAT 1 complies with South African National Standard 1217 for coating of pipes and with Naval Engineering Standard 713 for Smoke Toxicity.

Art.No: 60030 (10 Kg)

Art.No: 60032 (1 Kg)

NORDCOAT 1 SPECIAL

WINKEL® NORDBAK® NORDCOAT 1 SPECIAL is an outstanding corrosion, acid-resistant and waterproof coating which can be used on both concrete and steel, as well as a wide variety of other substrates. WINKEL® NORDBAK® NORDCOAT 1 SPECIAL is ideal for coating at low ambient temperatures. WINKEL® NORDBAK® NORDCOAT 1 SPECIAL complies with South African National Standard 1217 for coating of pipes and with Naval Engineering Standard 713 for Smoke Toxicity.

Art.No: 60031 (1 Kg)





7227 NORDCOAT 2

WINKEL® NORDBAK® 7227 NORDCOAT 2 is an outstanding heavy-duty wear, acid and corrosion resistant coating which can be used on steel, as well as a wide variety of other substrates. Specifically designed for plants where high levels of salts are present at pH values between 3 and 10.

Art.No: 60001 - Black (1 Kg)

Art.No: 60000 - Blue (1 Kg)

NORDCOAT 6

WINKEL® NORDBAK® NORDCOAT 6 is a coating range with various colours suitable for underground applications with outstanding corrosion and water- resistant properties which can be used on steel and concrete as well as a wide variety of other substrates. Tested against and complies with Naval Engineering Standard 713 for Smoke Toxicity, South African National Standard 1217 for pipe lining and against South African National Standard 241 (drinking water).

Art.No: 60043 Grey (5 Lt)

Art.No: 60044 White (5 Lt)

Art.No: 60045 Blue (5 Lt)

Art.No: 60046 Green (5 Lt)

Art.No: 60048 Yellow (5 Lt)

Art.No: 60049 Black (5 Lt)

Art.No: 60057 GP Grey (5 Lt)

Art.No: 60050 Red (5 Lt)

Art.No: 60051 Orange (5 Lt)

Art.No: 60047 Bright Green (5 Lt)

Art.No: 60054 Grey Green (5 Lt)

Art.No: 60055 Terracotte (5 Lt)

Art.No: 60056 Light Stone (5 Lt)

A STEEL PUTTY TROWEL MIX

WINKEL® NORDBAK® A STEEL TROWEL MIX is a metal repair product that can be machined, drilled, tapped or filed just like steel. WINKEL® NORDBAK® A STEEL TROWEL MIX applies readily to horizontal, vertical or overhead surfaces. WINKEL® NORDBAK® A STEEL TROWEL MIX resists abrasion and chemical corrosion, cures without heat or special devices, and is non-shrinking.

Art.No: 80030 (1 Kg)

Art.No: 80040 (12 Kg)

NORDWEAR 5

***Also available in Food Grade.**

WINKEL® NORDBAK® NORDWEAR 5 is an alumina filled co-polymer trowelable paste with excellent wear-resistant properties together with resilience, impact strength and chemical resistance. The product is also suitable for both waterborne slurries and pneumatic conveyancing. Complies to NES 713 for smoke toxicity.

Art.No: 50200 (10 Kg)

NORDWEAR 8

WINKEL® NORDBAK® NORDWEAR 8 is an alumina filled co-polymer trowelable paste with excellent wear-resistant properties together with resilience, impact strength and chemical resistance. The product is also suitable for both waterborne slurries and pneumatic conveyancing.

Art.No: 50600 (10 Kg)



ACID, CHEMICAL RESISTANT COATING AND WEAR RESISTANT PRODUCTS CRUSHER & MILL REPAIR PRODUCTS

Acid Resistance Chart

CHEMICALS	CRUSHER REPAIR PRODUCTS					WEARING COMPOUNDS												MISCELLANEOUS							CHEMICAL RESISTANT & ANTI CORROSION COATINGS																				
	BACKING-SUPERBAK	BACKING STANDARD	BACKING-HI-PERFORMANCE	BACKING-PRIMARY	TROWEL MIX	LOCKING COMPOUND	PNEUWEAR-HIGH TEMP.	PNEUWEAR-STANDARD	HI TEMP. 'B'	HI IMPACT. 'B'	HI IMPACT PULLEY	HI IMPACT 'C'	STANDARD 'B'	STANDARD 'C'	FIXWEAR	NORWEAR 5	NORWEAR 5FS	NORWEAR 5 ACID	NORWEAR 8	NORDTILE	ADHESIVE MIX	DEEP POUR GROUT	ACID GROUT	FAST SET GROUT	STEEL STICK	STEEL TROWEL MIX	NORDCOAT 1	NORDCOAT 1 SPECIAL	NORDCOAT 1/4 ETHANOL	NORDCOAT 2	NORDCOAT 6	NORDCOAT 6 COLOURS	NORDCOAT 7 SPECIAL	PSI											
%10 Hydrochloric Acid	-	-	-	-	-	-	-	-	-	-	-	-	-	-	-	-	-	-	-	-	-	-	-	-	-	-	-	-	-	-	-	-	-	-	-	-	-	-	-	-	-	-	-	-	-
%20 Hydrochloric Acid	-	-	-	-	-	-	-	-	-	-	-	-	-	-	-	-	-	-	-	-	-	-	-	-	-	-	-	-	-	-	-	-	-	-	-	-	-	-	-	-	-	-	-	-	-
%30 Hydrochloric Acid	-	-	-	-	-	-	-	-	-	-	-	-	-	-	-	-	-	-	-	-	-	-	-	-	-	-	-	-	-	-	-	-	-	-	-	-	-	-	-	-	-	-	-	-	-
%15 Sulphuric Acid	-	-	-	-	-	-	-	-	-	-	-	-	-	-	-	-	-	-	-	-	-	-	-	-	-	-	-	-	-	-	-	-	-	-	-	-	-	-	-	-	-	-	-	-	-
%30 Sulphuric Acid	-	-	-	-	-	-	-	-	-	-	-	-	-	-	-	-	-	-	-	-	-	-	-	-	-	-	-	-	-	-	-	-	-	-	-	-	-	-	-	-	-	-	-	-	-
%50 Sulphuric Acid	-	-	-	-	-	-	-	-	-	-	-	-	-	-	-	-	-	-	-	-	-	-	-	-	-	-	-	-	-	-	-	-	-	-	-	-	-	-	-	-	-	-	-	-	-
%95 Sulphuric Acid	-	-	-	-	-	-	-	-	-	-	-	-	-	-	-	-	-	-	-	-	-	-	-	-	-	-	-	-	-	-	-	-	-	-	-	-	-	-	-	-	-	-	-	-	-
%10 Sodium Hydroxide	-	-	-	-	-	-	-	-	-	-	-	-	-	-	-	-	-	-	-	-	-	-	-	-	-	-	-	-	-	-	-	-	-	-	-	-	-	-	-	-	-	-	-	-	-
%20 Sodium Hydroxide	-	-	-	-	-	-	-	-	-	-	-	-	-	-	-	-	-	-	-	-	-	-	-	-	-	-	-	-	-	-	-	-	-	-	-	-	-	-	-	-	-	-	-	-	-
%40 Sodium Hydroxide	-	-	-	-	-	-	-	-	-	-	-	-	-	-	-	-	-	-	-	-	-	-	-	-	-	-	-	-	-	-	-	-	-	-	-	-	-	-	-	-	-	-	-	-	-
%20 Phosphoric Acid	-	-	-	-	-	-	-	-	-	-	-	-	-	-	-	-	-	-	-	-	-	-	-	-	-	-	-	-	-	-	-	-	-	-	-	-	-	-	-	-	-	-	-	-	-
%100 Sabutol	-	-	-	-	-	-	-	-	-	-	-	-	-	-	-	-	-	-	-	-	-	-	-	-	-	-	-	-	-	-	-	-	-	-	-	-	-	-	-	-	-	-	-	-	-
%100 Iso Butanol	-	-	-	-	-	-	-	-	-	-	-	-	-	-	-	-	-	-	-	-	-	-	-	-	-	-	-	-	-	-	-	-	-	-	-	-	-	-	-	-	-	-	-	-	-
%100 MIBK	-	-	-	-	-	-	-	-	-	-	-	-	-	-	-	-	-	-	-	-	-	-	-	-	-	-	-	-	-	-	-	-	-	-	-	-	-	-	-	-	-	-	-	-	-
%100 Methanol	-	-	-	-	-	-	-	-	-	-	-	-	-	-	-	-	-	-	-	-	-	-	-	-	-	-	-	-	-	-	-	-	-	-	-	-	-	-	-	-	-	-	-	-	-
%100 n-Butanol	-	-	-	-	-	-	-	-	-	-	-	-	-	-	-	-	-	-	-	-	-	-	-	-	-	-	-	-	-	-	-	-	-	-	-	-	-	-	-	-	-	-	-	-	-
%100 HP Ethanol	-	-	-	-	-	-	-	-	-	-	-	-	-	-	-	-	-	-	-	-	-	-	-	-	-	-	-	-	-	-	-	-	-	-	-	-	-	-	-	-	-	-	-	-	-
%100 MEK	-	-	-	-	-	-	-	-	-	-	-	-	-	-	-	-	-	-	-	-	-	-	-	-	-	-	-	-	-	-	-	-	-	-	-	-	-	-	-	-	-	-	-	-	-
%100 n-Propanol	-	-	-	-	-	-	-	-	-	-	-	-	-	-	-	-	-	-	-	-	-	-	-	-	-	-	-	-	-	-	-	-	-	-	-	-	-	-	-	-	-	-	-	-	-
%100 Acetone	-	-	-	-	-	-	-	-	-	-	-	-	-	-	-	-	-	-	-	-	-	-	-	-	-	-	-	-	-	-	-	-	-	-	-	-	-	-	-	-	-	-	-	-	-
%100 Ethyl Acetate	-	-	-	-	-	-	-	-	-	-	-	-	-	-	-	-	-	-	-	-	-	-	-	-	-	-	-	-	-	-	-	-	-	-	-	-	-	-	-	-	-	-	-	-	-
%100 Ethanol	-	-	-	-	-	-	-	-	-	-	-	-	-	-	-	-	-	-	-	-	-	-	-	-	-	-	-	-	-	-	-	-	-	-	-	-	-	-	-	-	-	-	-	-	-
%100 Copper Sulphate	-	-	-	-	-	-	-	-	-	-	-	-	-	-	-	-	-	-	-	-	-	-	-	-	-	-	-	-	-	-	-	-	-	-	-	-	-	-	-	-	-	-	-	-	-
%30 Chlorides	-	-	-	-	-	-	-	-	-	-	-	-	-	-	-	-	-	-	-	-	-	-	-	-	-	-	-	-	-	-	-	-	-	-	-	-	-	-	-	-	-	-	-	-	-

Wear Resistance

	CRUSHER REPAIR PRODUCTS												WEARING COMPOUNDS												MISCELLANEOUS							CHEMICAL RESISTANT & ANTI CORROSION COATINGS															
	BACKING-SUPERBAK	BACKING STANDARD	BACKING-HI-PERFORMANCE	BACKING-PRIMARY	TROWEL MIX	LOCKING COMPOUND	PNEUWEAR-HIGH TEMP.	PNEUWEAR-STANDARD	HI TEMP. 'B'	HI IMPACT. 'B'	HI IMPACT PULLEY	HI IMPACT 'C'	STANDARD 'B'	STANDARD 'C'	FIXWEAR	NORWEAR 5	NORWEAR 5FS	NORWEAR 5 ACID	NORWEAR 8	NORDTILE	ADHESIVE MIX	DEEP POUR GROUT	ACID GROUT	FAST SET GROUT	STEEL STICK	STEEL TROWEL MIX	NORDCOAT 1	NORDCOAT 1 SPECIAL	NORDCOAT 1/4 ETHANOL	NORDCOAT 2	NORDCOAT 6	NORDCOAT 6 COLOURS	NORDCOAT 7 SPECIAL	PSI													
Gold	✓	✓✓	✓✓✓	✓✓✓	✓✓✓	✓✓✓	✓✓	✓✓	✓✓	✓✓	✓✓✓	✓	✓	✓	✓	✓✓✓	✓✓✓	✓✓✓	✓✓✓	✓✓✓	✓✓✓	✓✓✓	✓✓✓	✓✓✓	✓✓✓	✓✓✓	✓✓✓	✓✓✓	✓✓✓	✓✓✓	✓✓✓	✓✓✓	✓✓✓	✓✓✓	✓✓✓	✓✓✓	✓✓✓										
Diamond	✓	✓✓	✓✓✓	✓✓✓	✓✓✓	✓✓✓	✓✓	✓✓	✓✓	✓✓	✓✓✓	✓	✓	✓	✓	✓✓✓	✓✓✓	✓✓✓	✓✓✓	✓✓✓	✓✓✓	✓✓✓	✓✓✓	✓✓✓	✓✓✓	✓✓✓	✓✓✓	✓✓✓	✓✓✓	✓✓✓	✓✓✓	✓✓✓	✓✓✓	✓✓✓	✓✓✓	✓✓✓	✓✓✓										
Platinum		✓	✓✓✓	✓✓✓	✓✓✓	✓✓✓	✓	✓✓	✓✓	✓✓	✓✓✓					✓✓	✓✓	✓✓	✓✓	✓✓	✓✓	✓✓	✓✓	✓✓	✓✓	✓✓	✓✓	✓✓	✓✓	✓✓	✓✓	✓✓	✓✓	✓✓	✓✓	✓✓	✓✓										
Coal		✓	✓✓✓	✓✓✓	✓✓✓	✓✓✓	✓	✓	✓	✓	✓✓✓					✓	✓	✓	✓	✓	✓	✓	✓	✓	✓	✓	✓	✓	✓	✓	✓	✓	✓	✓	✓	✓	✓	✓	✓	✓	✓	✓	✓	✓	✓	✓	✓
Chrome		✓	✓✓✓	✓✓✓	✓✓✓	✓✓✓	✓	✓	✓	✓	✓✓✓					✓	✓	✓	✓	✓	✓	✓	✓	✓	✓	✓	✓	✓	✓	✓	✓	✓	✓	✓	✓	✓	✓	✓	✓	✓	✓	✓	✓	✓	✓	✓	✓



WINKEL® NORDBAK® YOUR RELIABLE PARTNER FOR WEARING PROBLEMS



WINKEL

İHTİYAÇLARINIZA DOĞRU BAKIŞ AÇISI!

- Mühendislik Yapımcıları
- Teknik Aerosoller
- Yağlayıcılar
- Sprey Boyalar
- Epoksi Tamir Macunları
- Abit ve Kimyasal Dayanımı
- Aşınma Önleyici Epoksiler
- Zemin Kaplama Epoksileri
- Kırıcı & Değirmen Yastıklama Epoksileri
- Parça, Yüzey ve El Temizleyicileri

Nordbak

WINKEL

WINBACK - NORDBAK
STANDART BACKING COMPOUND

Küçük konik kırıcılar, sarmal kırıcılar, değirmenler, püvritörler ve diğer ağır öğütücü makineler için sert, güçlü ve ideal bir yastıklama malzemesidir. 5 ft kırıcılar ve altın, bakır ve düşük mukavemetli cevherler için uygundur.

Avantajları:

- ✓ Yüksekliğin Belirli Aralıkları
- ✓ Formülasyonunda primer çukur yataklar
- ✓ 100% saf epoksi içerir
- ✓ Çoğu alüminyum ve magnezyum taneleri
- ✓ Sert ve dayanıklı
- ✓ Kalıcı ve güçlü yapıştırma

Fiziksel Özellikler

Bağış Dayanımı: Her tip kırıcı için uygundur. Operasyonel Sıcaklık: 5-30°C

Çalışma süresi: 10 dakika Jelleşme süresi (25°C): 20 dakika

Renk: Gri / Bej Kilo: 10 kg

WINKEL

MIRACLE IN A CAN

Enerji hammaddelerini işlerken, proseslerinizde ve işleme ekipmanlarınızda alternatif, yenilikçi ve sürdürülebilir Tamir-Bakım-Onarım ürün ve yöntemlerine yer açın.

Problemelerinize doğru bakış açısı!

Yenibosna Değer Enerji Sitesi 9. Blok No. 13
Yenibosna/Bahçeşehir-İSTANBUL

teknik@winkel.com.tr www.winkel.com.tr

WINKEL

MIRACLE IN A CAN

Çimento sektöründeki aşınma problemlerinizi için WINKEL çözümleri!

WINKEL PRO W-CB2
Seramik Dolgulu Epoksi Macun

Müşteri Yorumu:

5 ay önce klinker kövelli bant döküş sutfuna yapmış olduğunuz aşınmaz uygulama sayesinde 20 günde bir tekrar eden aşınma olayına çözüm bulunmuştur.

Destekleriniz ve uygulamanız için bakım ekibimize teşekkür ederiz.

WINKEL

Yenibosna Değer Enerji Sitesi 9. Blok No. 13 Yenibosna/Bahçeşehir-İSTANBUL

teknik@winkel.com.tr info@winkel.com.tr +90 (212) 485 38 00

WINKEL

MIRACLE IN A CAN

CRUSHER & MILL REPAIR PRODUCTS	WEAR AND ABRASION RESISTANT COMPOUNDS	COATING PRODUCTS
GROUTS AND METAL REPAIR	FLOORING PRODUCTS	ACID RESISTANT COATING

WINBACK® Nordbak®

@winkel.tr @winkel.tr @winkel-trkiye

WINKEL

MIRACLE IN A CAN

METAL MIX 5 MINUTE EPOXY PUTTY	WA PLASTIC STEEL EPOXY PUTTY	WB PLASTIC STEEL EPOXY LIQUID
BRUSHABLE CERAMIC EPOXY LIQUID	W-CB 2 EPOXY CERAMIC REPAIR PUTTY	W-WR PUMP WEAR RESISTANT EPOXY PUTTY

WINKEL WINBACK® Nordbak®

www.winkel.com.tr



WINKEL®

Nordbak®



winkel.tr



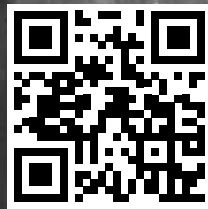
winkel.tr



winkel-turkiye



winkel



www.winkelgroup.de

For Information and Communication;



info@winkel.com.tr



teknik@winkel.com.tr